



Centre of Testing Service

# TEST REPORT

**RoHS 2002/95/EC**

**Report No.:**

**CNB070831-01390-C**

**CENTRE OF TESTING SERVICE**

**Fl.2 South Huoju Building, No.181 Canghai Rd., Jianguo High-tech Park, Ningbo China**

**PHONE +86-574-87912121 FAX +86-574-87907993**



## TEST REPORT

REPORT No. : CNB070831-01390-C  
DATE : Oct. 10, 2007  
PAGE : 1 of 11

### Table of contents

<b>1</b>	<b>General Information</b>	<b>2</b>
1.1	Application Details	2
1.2	Description of the Test Item	2
1.3	Directive	2
<b>2</b>	<b>Survey report</b>	<b>3</b>
2.1	Description of the Sample	3
2.2	Sample Receiving Date	3
2.3	Testing Period	3
2.4	Requested	3
2.5	Survey Report Contents	3
<b>3</b>	<b>Test result of Selective Test</b>	<b>5</b>
3.1	Test Requested	5
3.2	Test Method	5
3.3	Test Method Flow Chart	5
3.4	Test Results	7
<b>4</b>	<b>Sample Reference Photo</b>	<b>11</b>

The measurement results only apply to the submitted samples.

Copyright of this report is owned by Centre of Testing Service and may not be reproduced other than in full except with the written approval of the issuing Company.

#### Centre of Testing Service

Fl.2 south Huoju Building, No.181 canghai Rd., Jiangdong High-tech Park Ningbo China

Tel: +86-574-87912121 (16 lines)

Fax: +86-574-87907993

Complaint line: +86-574-87908003

E-mail: cts@cts-lab.com

See Reverse For Terms And Conditions of Service



## TEST REPORT

REPORT No. : CNB070831-01390-C  
DATE : Oct. 10, 2007  
PAGE : 2 of 11

### 1 General Information

#### 1.1 Application Details

Name : CHANGZHOU CITY TONGDE ELECTRIC APPLIANCE  
EQUIPMENT CO., LTD.  
Address : NO. 45 YINGBIN ROAD, ZHENGLU TOWN, WUJIN DISTRICT,  
CHANGZHOU CITY, JIANGSU PROVINCE  
Country : CHINA  
Telephone : +86-519-83970332  
Fax : +86-519-83978500  
Contact : WENYAN CUI  
Telephone : +86-519-83970332

#### 1.2 Description of the Test Item

Type of product : LEAD-ACID BATTERY  
Type identification : TDQ-1D  
Brand name : /

#### 1.3 Directive

**2002/95/EC**

Restriction of the use of certain hazardous substances in electrical and electronic equipment  
27 January 2003

*in connection with:*

**2002/96/EC**

*Waste electrical and electronic equipment*  
27 January 2003

**2005/618/EC**

Establishing the maximum concentration values for certain hazardous substances in electrical and  
electronic equipment  
18 August 2005

The measurement results only apply to the submitted samples.

Copyright of this report is owned by Centre of Testing Service and may not be reproduced other than in full except with the written approval of the issuing Company.

**Centre of Testing Service**

Fl.2 south Huoju Building, No.181 canghai Rd., Jiangdong High-tech Park Ningbo China

Tel: +86-574-87912121 (16 lines)

Fax: +86-574-87907993

Complaint line: +86-574-87908003

E-mail: cts@cts-lab.com

See Reverse For Terms And Conditions of Service



## TEST REPORT

REPORT No. : CNB070831-01390-C  
DATE : Oct. 10, 2007  
PAGE : 3 of 11

## 2 Survey report

### 2.1 Description of the Sample

Product: LEAD-ACID BATTERY  
Type: TDQ-1D  
Brand name: /

### 2.2 Sample Receiving Date

Aug. 31, 2007

### 2.3 Testing Period

Sep. 1, 2007 to Oct. 8, 2007

### 2.4 Requested

To combine the test reports for the submitted sample and test un-tested items.

### 2.5 Survey Report Contents

Test report	Report No	Issue date
	SGS SH6147290/CHEM	2006.12.08
	TUV TRHZPR0604422	2006.04.27

Conclusion: Based on the reports submitted by applicant, CTS quote the test data from the original reports as following



## TEST REPORT

REPORT No. : CNB070831-01390-C  
 DATE : Oct. 10, 2007  
 PAGE : 4 of 11

### Survey part

Part name No.1	:	PVC (RED)
Model	:	PVC (RED)
Vendor	:	LTK WIRING CO., LTD.
Report No	:	SGS SH6147290/CHEM
Part name No.2	:	PVC 塑料粒子 (黄色)
Model	:	/
Vendor	:	余姚市泗门镇吉方线材厂
Report No	:	TUV TRHZPR0604422

### Test Data Summary

Item		Pb	Cd	Hg	Cr <sup>6+</sup>	PBBs	PBDEs
Unit		mg/kg	mg/kg	mg/kg	mg/kg	mg/kg	mg/kg
Limit		1000	100	1000	1000	1000	1000
Part No.1 PVC(RED)	Red plastic	4	N.D.	N.D.	N.D.	N.D.	N.D.
Part No.2	PVC 塑料粒子 (黄色)	466.96	N.D.	N.D.	3.08	N.D.	N.D.

Note : 1. N.D.=Not detected (<MDL)  
 2. N.A.=Not applicable  
 3. N.C.=Not conducted  
 4. 1mg/kg=1ppm=0.0001%

Disclaim : 1. The method detect limit of other labs may be different from that of CTS.  
 2. CTS takes no responsibility for any mistakes caused by inaccurate and/or invalid information submitted by the applicant.



**TEST REPORT**

REPORT No. : CNB070831-01390-C  
 DATE : Oct. 10, 2007  
 PAGE : 5 of 11

**3 Test result of Selective Test**

**3.1 Test Requested**

As specified by applicant, to determine the Lead, Cadmium, Mercury, Hexavalent Chromium and PBBs & PBDEs content in the submitted sample in accordance with Directive 2002/95/EC (RoHS).

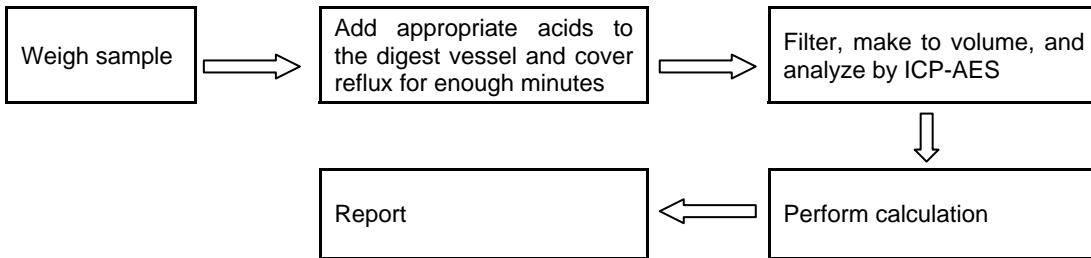
**3.2 Test Method**

Test Item(s)	Test Method	Test Instrument	MDL
Lead (Pb)	Refer to US EPA3050B	ICP-AES	2mg/kg
Cadmium (Cd)	Refer to EN1122:2001B	ICP-AES	2mg/kg
Mercury (Hg)	Refer to US EPA3052	ICP-AES	2mg/kg
Chromium (Cr VI)	Refer to US EPA3060A & US EPA 7196A	UV-Vis	2mg/kg
PBBs	Refer to US EPA3540C	GC-MS	5mg/kg
PBDEs	Refer to US EPA3540C	GC-MS	5mg/kg

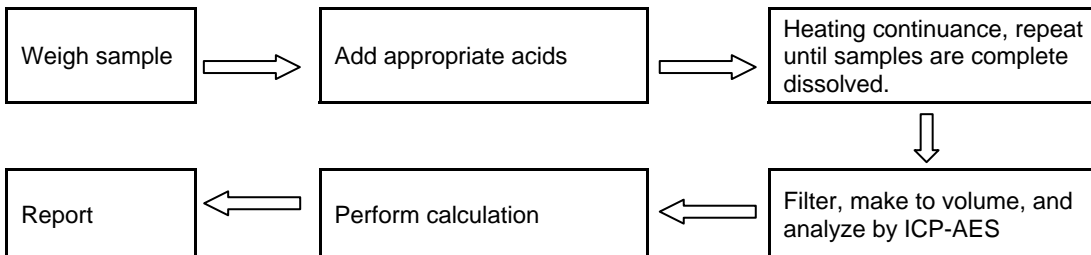
Remark: MDL= Method Detect Limit

**3.3 Test Method Flow Chart**

1. EPA3050B:



2. EN1122 2001 method B:



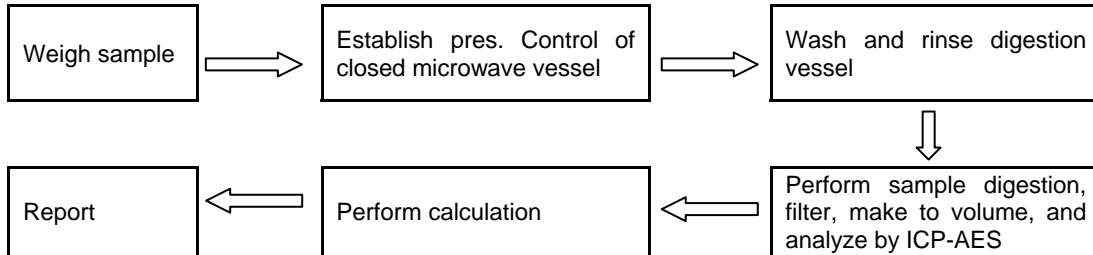
The measurement results only apply to the submitted samples.  
 Copyright of this report is owned by Centre of Testing Service and may not be reproduced other than in full except with the written approval of the issuing Company.



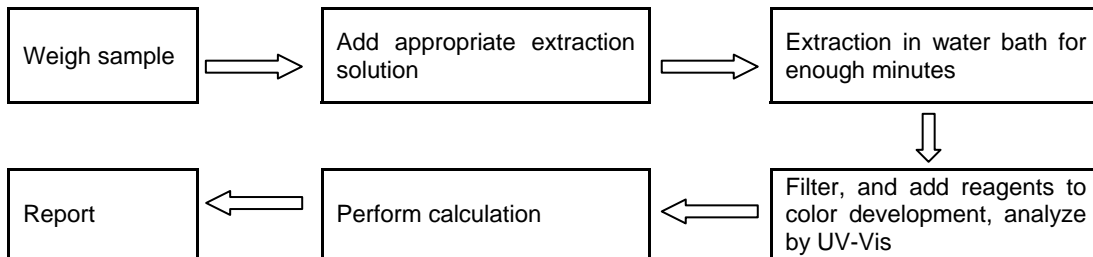
## TEST REPORT

REPORT No. : CNB070831-01390-C  
DATE : Oct. 10, 2007  
PAGE : 6 of 11

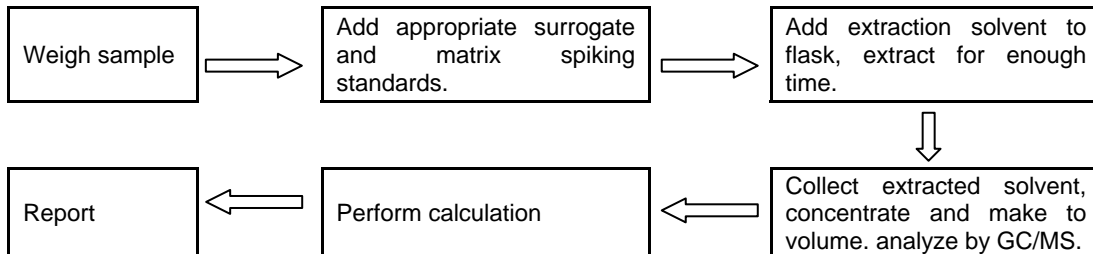
### 3. EPA3052:



### 4. EPA3060A & EPA 7196A:



### 5. EPA3540C:



The measurement results only apply to the submitted samples.  
Copyright of this report is owned by Centre of Testing Service and may not be reproduced other than in full except with the written approval of the issuing Company.

#### Centre of Testing Service

Fl.2 south Huoju Building, No.181 canghai Rd., Jiangdong High-tech Park Ningbo China

Tel: +86-574-87912121 (16 lines)

Fax: +86-574-87907993

Complaint line: +86-574-87908003

E-mail: cts@cts-lab.com

See Reverse For Terms And Conditions of Service



## TEST REPORT

REPORT No. : CNB070831-01390-C  
 DATE : Oct. 10, 2007  
 PAGE : 7 of 11

### 3.4 Test Results

When tested as specified, the submitted sample complied with the requirement of commission Decision of 18 Aug 2005 amending Directive 2002/95/EC notified under document 2005/618/EC

Test Item(s)	Unit	Limit	Result				
			No.1	No.2	No.3	No.4	No.5
Lead (Pb)	mg/kg	1000	104	185	108	147	152
Cadmium (Cd)	mg/kg	100	9	N.D.	N.D.	N.D.	N.D.
Mercury (Hg)	mg/kg	1000	N.D.	N.D.	N.D.	N.D.	N.D.
Chromium VI (CrVI)	mg/kg	1000	N.D.	N.D.	N.D.	N.D.	N.D.
Sum of PBBs	mg/kg	1000	N.D.	N.D.	N.D.	N.D.	N.D.
Monobromobiphenyl	mg/kg	---	N.D.	N.D.	N.D.	N.D.	N.D.
Dibromobiphenyl	mg/kg	---	N.D.	N.D.	N.D.	N.D.	N.D.
Tibromobiphenyl	mg/kg	---	N.D.	N.D.	N.D.	N.D.	N.D.
Tetrabromobiphenyl	mg/kg	---	N.D.	N.D.	N.D.	N.D.	N.D.
Pentabromobiphenyl	mg/kg	---	N.D.	N.D.	N.D.	N.D.	N.D.
Hexabromobiphenyl	mg/kg	---	N.D.	N.D.	N.D.	N.D.	N.D.
Heptabromobiphenyl	mg/kg	---	N.D.	N.D.	N.D.	N.D.	N.D.
Octabromobiphenyl	mg/kg	---	N.D.	N.D.	N.D.	N.D.	N.D.
Nonabromodiphenyl	mg/kg	---	N.D.	N.D.	N.D.	N.D.	N.D.
Decabromodiphenyl	mg/kg	---	N.D.	N.D.	N.D.	N.D.	N.D.
Sum of PBDEs	mg/kg	1000	N.D.	N.D.	N.D.	N.D.	N.D.
Monobromodiphenyl ether	mg/kg	---	N.D.	N.D.	N.D.	N.D.	N.D.
Dibromodiphenyl ether	mg/kg	---	N.D.	N.D.	N.D.	N.D.	N.D.
Tibromodiphenyl ether	mg/kg	---	N.D.	N.D.	N.D.	N.D.	N.D.
Tetrabromodiphenyl ether	mg/kg	---	N.D.	N.D.	N.D.	N.D.	N.D.
Pentabromodiphenyl ether	mg/kg	---	N.D.	N.D.	N.D.	N.D.	N.D.
Hexabromodiphenyl ether	mg/kg	---	N.D.	N.D.	N.D.	N.D.	N.D.
Heptabromodiphenyl ether	mg/kg	---	N.D.	N.D.	N.D.	N.D.	N.D.
Octabromodiphenyl ether	mg/kg	---	N.D.	N.D.	N.D.	N.D.	N.D.
Nonabromodiphenyl ether	mg/kg	---	N.D.	N.D.	N.D.	N.D.	N.D.
Decabromodiphenyl ether	mg/kg	---	N.D.	N.D.	N.D.	N.D.	N.D.

The measurement results only apply to the submitted samples.  
 Copyright of this report is owned by Centre of Testing Service and may not be reproduced other than in full except with the written approval of the issuing Company.

#### Centre of Testing Service

Fl.2 south Huoju Building, No.181 canghai Rd., Jiangdong High-tech Park Ningbo China

Tel: +86-574-87912121 (16 lines)

Fax: +86-574-87907993

Complaint line: +86-574-87908003

E-mail: cts@cts-lab.com

See Reverse For Terms And Conditions of Service



## TEST REPORT

REPORT No. : CNB070831-01390-C  
 DATE : Oct. 10, 2007  
 PAGE : 8 of 11

Test Item(s)	Unit	Limit	Result				
			No.6	No.7	No.8	No.9	No.10
Lead (Pb)	mg/kg	1000	8188*	N.C.	N.C.	N.C.	N.C.
Cadmium (Cd)	mg/kg	100	6	N.D.	N.C.	71	11
Mercury (Hg)	mg/kg	1000	N.D.	N.D.	N.D.	N.D.	N.D.
Chromium VI (CrVI)	mg/kg	1000	N.D.	N.D.	N.D.	N.D.	N.D.
Sum of PBBs	mg/kg	1000	N.A.	N.A.	N.A.	N.A.	N.A.
Monobromobiphenyl	mg/kg	---	N.A.	N.A.	N.A.	N.A.	N.A.
Dibromobiphenyl	mg/kg	---	N.A.	N.A.	N.A.	N.A.	N.A.
Tribromobiphenyl	mg/kg	---	N.A.	N.A.	N.A.	N.A.	N.A.
Tetrabromobiphenyl	mg/kg	---	N.A.	N.A.	N.A.	N.A.	N.A.
Pentabromobiphenyl	mg/kg	---	N.A.	N.A.	N.A.	N.A.	N.A.
Hexabromobiphenyl	mg/kg	---	N.A.	N.A.	N.A.	N.A.	N.A.
Heptabromobiphenyl	mg/kg	---	N.A.	N.A.	N.A.	N.A.	N.A.
Octabromobiphenyl	mg/kg	---	N.A.	N.A.	N.A.	N.A.	N.A.
Nonabromodiphenyl	mg/kg	---	N.A.	N.A.	N.A.	N.A.	N.A.
Decabromodiphenyl	mg/kg	---	N.A.	N.A.	N.A.	N.A.	N.A.
Sum of PBDEs	mg/kg	1000	N.A.	N.A.	N.A.	N.A.	N.A.
Monobromodiphenyl ether	mg/kg	---	N.A.	N.A.	N.A.	N.A.	N.A.
Dibromodiphenyl ether	mg/kg	---	N.A.	N.A.	N.A.	N.A.	N.A.
Tribromodiphenyl ether	mg/kg	---	N.A.	N.A.	N.A.	N.A.	N.A.
Tetrabromodiphenyl ether	mg/kg	---	N.A.	N.A.	N.A.	N.A.	N.A.
Pentabromodiphenyl ether	mg/kg	---	N.A.	N.A.	N.A.	N.A.	N.A.
Hexabromodiphenyl ether	mg/kg	---	N.A.	N.A.	N.A.	N.A.	N.A.
Heptabromodiphenyl ether	mg/kg	---	N.A.	N.A.	N.A.	N.A.	N.A.
Octabromodiphenyl ether	mg/kg	---	N.A.	N.A.	N.A.	N.A.	N.A.
Nonabromodiphenyl ether	mg/kg	---	N.A.	N.A.	N.A.	N.A.	N.A.
Decabromodiphenyl ether	mg/kg	---	N.A.	N.A.	N.A.	N.A.	N.A.

The measurement results only apply to the submitted samples.  
 Copyright of this report is owned by Centre of Testing Service and may not be reproduced other than in full except with the written approval of the issuing Company.

### Centre of Testing Service

Fl.2 south Huoju Building, No.181 canghai Rd., Jiangdong High-tech Park Ningbo China

Tel: +86-574-87912121 (16 lines)

Fax: +86-574-87907993

Complaint line: +86-574-87908003

E-mail: cts@cts-lab.com

See Reverse For Terms And Conditions of Service



## TEST REPORT

REPORT No. : CNB070831-01390-C  
 DATE : Oct. 10, 2007  
 PAGE : 9 of 11

Test Item(s)	Unit	Limit	Result				
			No.11	No.12	No.13	No.14	No.15
Lead (Pb)	mg/kg	1000	N.C.	22	708	301	433
Cadmium (Cd)	mg/kg	100	N.C.	N.D.	N.D.	N.D.	N.D.
Mercury (Hg)	mg/kg	1000	N.D.	N.D.	N.D.	N.D.	N.D.
Chromium VI (CrVI)	mg/kg	1000	N.D.	N.D.	N.D.	N.D.	N.D.
Sum of PBBs	mg/kg	1000	N.A.	N.D.	N.D.	N.D.	N.A.
Monobromobiphenyl	mg/kg	---	N.A.	N.D.	N.D.	N.D.	N.A.
Dibromobiphenyl	mg/kg	---	N.A.	N.D.	N.D.	N.D.	N.A.
Tribromobiphenyl	mg/kg	---	N.A.	N.D.	N.D.	N.D.	N.A.
Tetrabromobiphenyl	mg/kg	---	N.A.	N.D.	N.D.	N.D.	N.A.
Pentabromobiphenyl	mg/kg	---	N.A.	N.D.	N.D.	N.D.	N.A.
Hexabromobiphenyl	mg/kg	---	N.A.	N.D.	N.D.	N.D.	N.A.
Heptabromobiphenyl	mg/kg	---	N.A.	N.D.	N.D.	N.D.	N.A.
Octabromobiphenyl	mg/kg	---	N.A.	N.D.	N.D.	N.D.	N.A.
Nonabromodiphenyl	mg/kg	---	N.A.	N.D.	N.D.	N.D.	N.A.
Decabromodiphenyl	mg/kg	---	N.A.	N.D.	N.D.	N.D.	N.A.
Sum of PBDEs	mg/kg	1000	N.A.	N.D.	N.D.	N.D.	N.A.
Monobromodiphenyl ether	mg/kg	---	N.A.	N.D.	N.D.	N.D.	N.A.
Dibromodiphenyl ether	mg/kg	---	N.A.	N.D.	N.D.	N.D.	N.A.
Tribromodiphenyl ether	mg/kg	---	N.A.	N.D.	N.D.	N.D.	N.A.
Tetrabromodiphenyl ether	mg/kg	---	N.A.	N.D.	N.D.	N.D.	N.A.
Pentabromodiphenyl ether	mg/kg	---	N.A.	N.D.	N.D.	N.D.	N.A.
Hexabromodiphenyl ether	mg/kg	---	N.A.	N.D.	N.D.	N.D.	N.A.
Heptabromodiphenyl ether	mg/kg	---	N.A.	N.D.	N.D.	N.D.	N.A.
Octabromodiphenyl ether	mg/kg	---	N.A.	N.D.	N.D.	N.D.	N.A.
Nonabromodiphenyl ether	mg/kg	---	N.A.	N.D.	N.D.	N.D.	N.A.
Decabromodiphenyl ether	mg/kg	---	N.A.	N.D.	N.D.	N.D.	N.A.

Test Part Description :

- No.1 : Green plastic shell
- No.2 : White plastic cover
- No.3 : Black rubber cover
- No.4 : Red marking glue

The measurement results only apply to the submitted samples.  
 Copyright of this report is owned by Centre of Testing Service and may not be reproduced other than in full except with the written approval of the issuing Company.

**Centre of Testing Service**

Fl.2 south Huoju Building, No.181 canghai Rd., Jiangdong High-tech Park Ningbo China

Tel: +86-574-87912121 (16 lines)

Fax: +86-574-87907993

Complaint line: +86-574-87908003

E-mail: cts@cts-lab.com

See Reverse For Terms And Conditions of Service



# CTS

CENTRE OF TESTING SERVICE

## TEST REPORT

REPORT No. : CNB070831-01390-C  
DATE : Oct. 10, 2007  
PAGE : 10 of 11

No.5 : Blue marking blue  
No.6 : Silvery wiring terminal  
No.7 : Electricity A bus bar  
No.8 : Anode board gridding  
No.9 : Filler of the anode board gridding  
No.10 : Cathode board gridding  
No.11 : Filler of the cathode board gridding  
No.12 : Clapboard with electrolyte  
No.13 : Blue plastic jacket of the lead  
No.14 : Black pyrocondensation tube of the lead  
No.15 : Cupreous wire of the lead

Note : 1. Specimens, which requested to determine Cadmium, Mercury and Lead Content, have been dissolved completely  
2. N.D. = not detected (less than MDL)  
3. N.A. = not applicable  
4. N.C. = not conducted  
5. 1mg/kg=1ppm=0.0001%  
6. The test results only apply to the materials requested by applicant.  
7. \* Sample No.6 is copper alloy. The lead content which is under 4% (40000ppm) is exempted from the requirement of RoHS Directive (2002/95/EC).

Written by: *Tracy*

Inspected by: *Theresa*

Approved by: *Jerry*

Jerry Hu  
CHEMICAL MANAGER



\*\*\*End of Report\*\*\*

The measurement results only apply to the submitted samples.  
Copyright of this report is owned by Centre of Testing Service and may not be reproduced other than in full except with the written approval of the issuing Company.

**Centre of Testing Service**

Fl.2 south Huoju Building, No.181 canghai Rd., Jiangdong High-tech Park Ningbo China

Tel: +86-574-87912121 (16 lines)

Fax: +86-574-87907993

Complaint line: +86-574-87908003

E-mail: cts@cts-lab.com

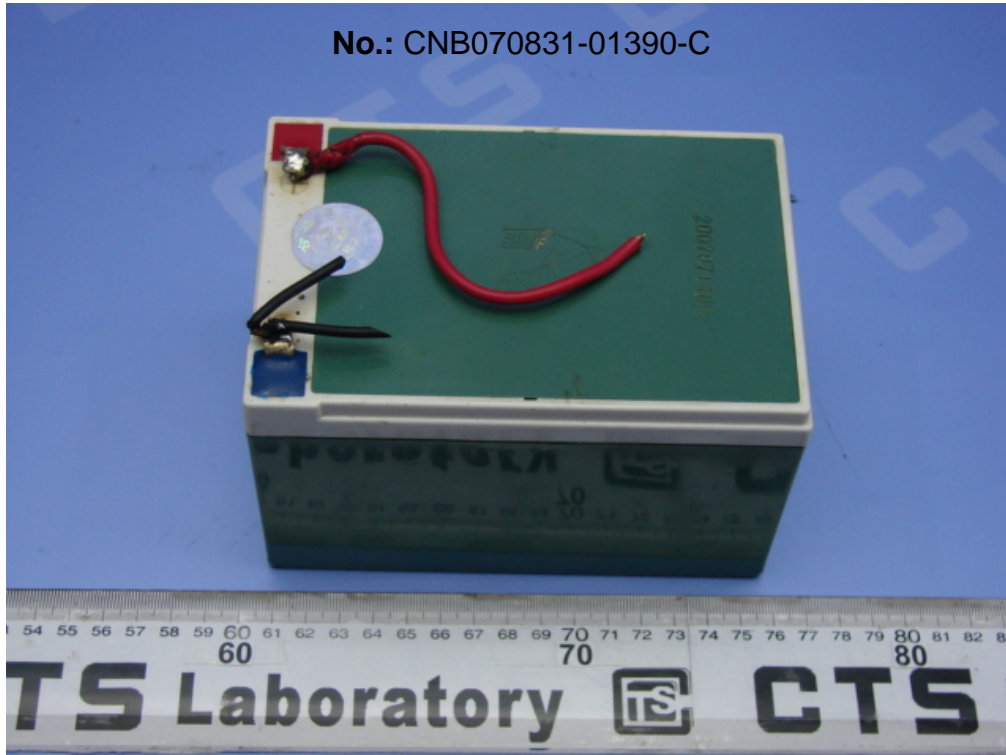
See Reverse For Terms And Conditions of Service



**TEST REPORT**

REPORT No. : CNB070831-01390-C  
DATE : Oct. 10, 2007  
PAGE : 11 of 11

**4 Sample Reference Photo**



The measurement results only apply to the submitted samples.  
Copyright of this report is owned by Centre of Testing Service and may not be reproduced other than in full except with the written approval of the issuing Company.

**Centre of Testing Service**

Fl.2 south Huoju Building, No.181 canghai Rd., Jiangdong High-tech Park Ningbo China

Tel: +86-574-87912121 (16 lines)

Fax: +86-574-87907993

Complaint line: +86-574-87908003

E-mail: cts@cts-lab.com

See Reverse For Terms And Conditions of Service